

Swaziland's Independent Power Producers

Montigny Investments Limited

"We Add Value"

Biomass Energy



“Sustainable Development is development that meets the needs of the present without compromising the ability of future generations to meet their own needs”

-UN “Our Common Future” Report



The SADC Landscape

Low Electrification · Cost & Type of Energy

- **35%** of the region's residents have access to electricity
 - **37%** in East Africa
 - **44 %** in West Africa*
- **5%** of rural areas in SADC have access to electricity

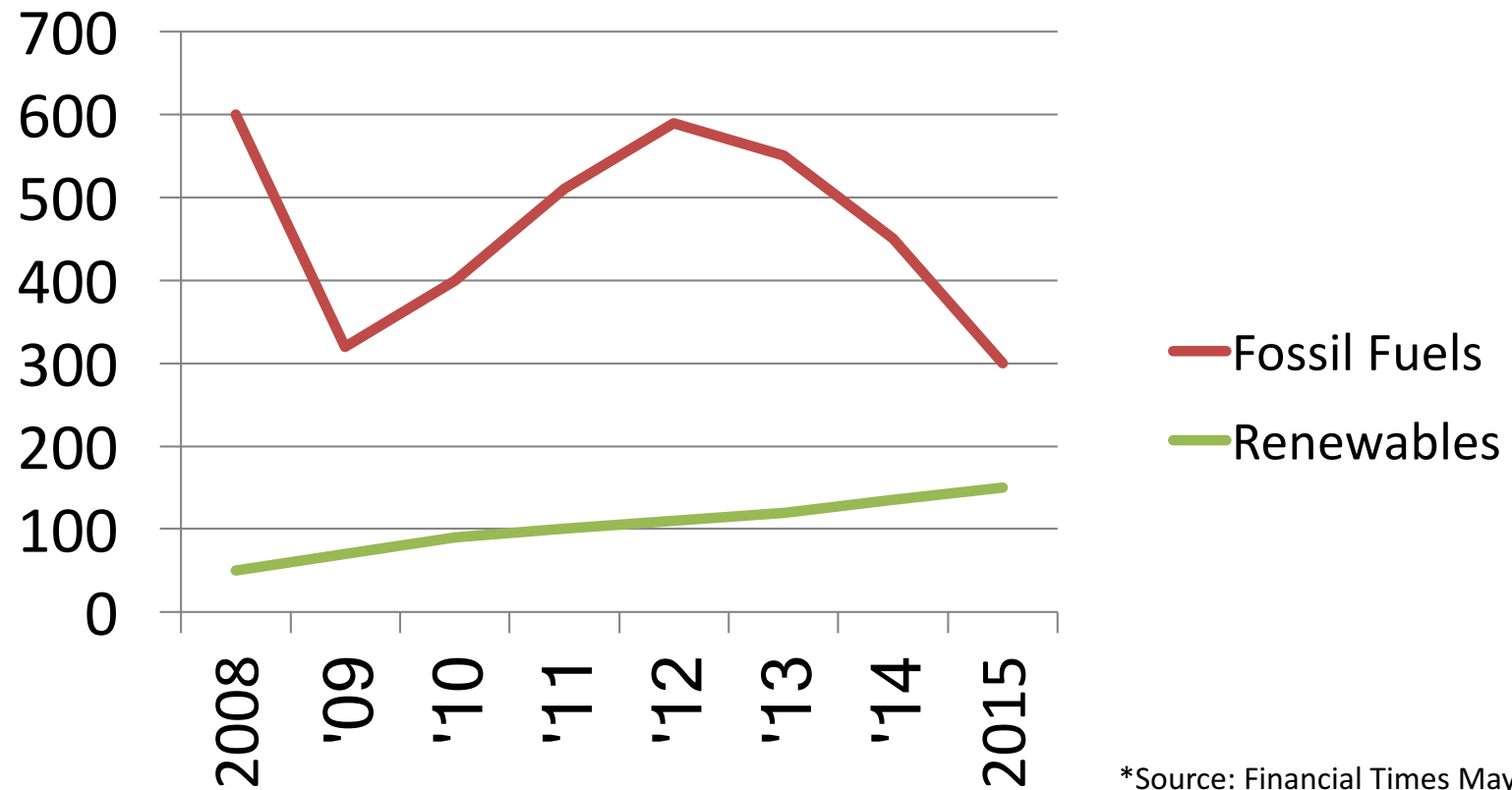
*Source: SADC 2017



*“Countries with electrification rates below **80%** will continue to face economic instability”*

Coal supplies 62 % of power generation in Southern Africa

The trend in subsidies for Fossil Fuels vs. Renewables (\$bn)

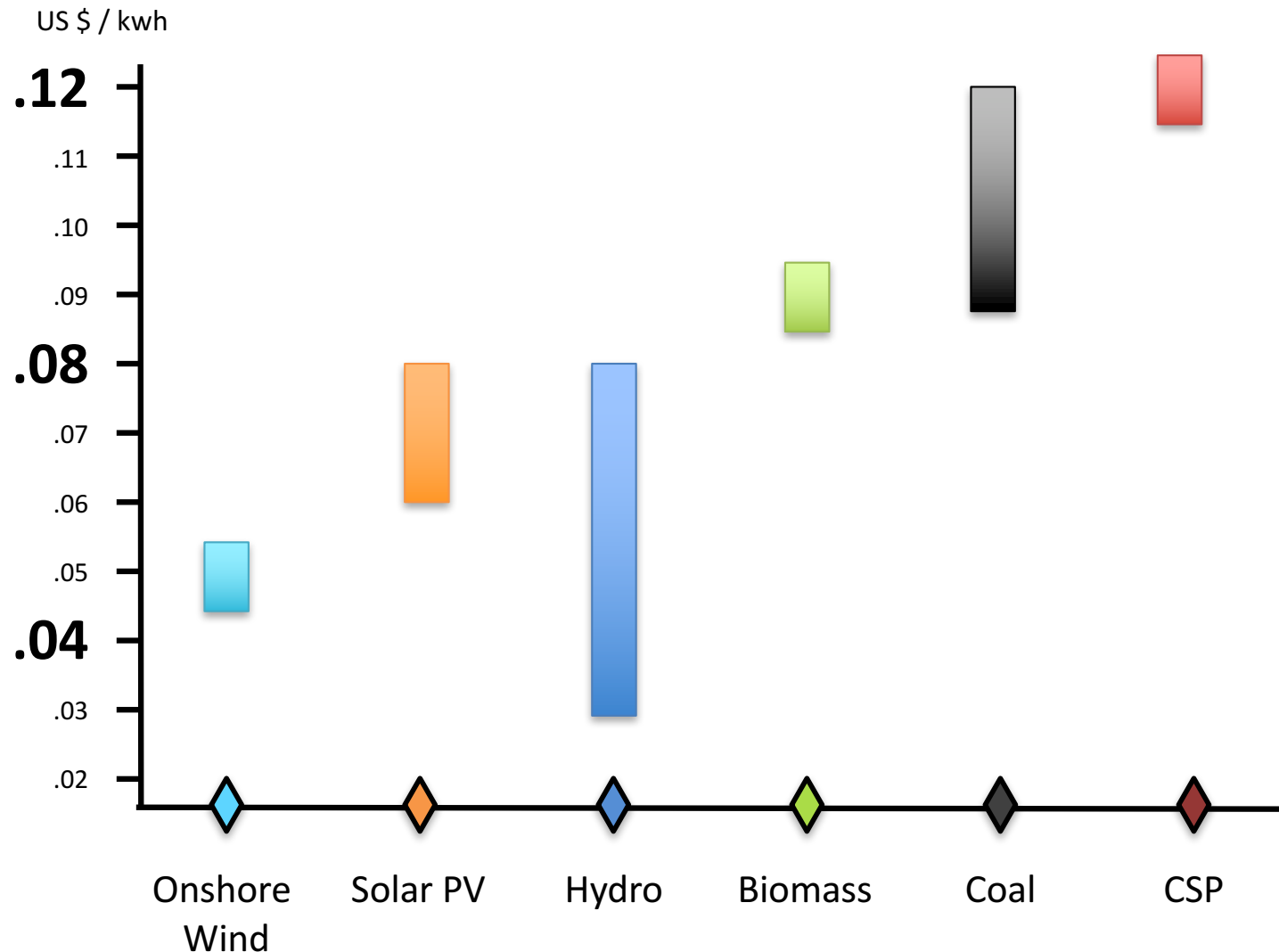


*Source: Financial Times May 2017



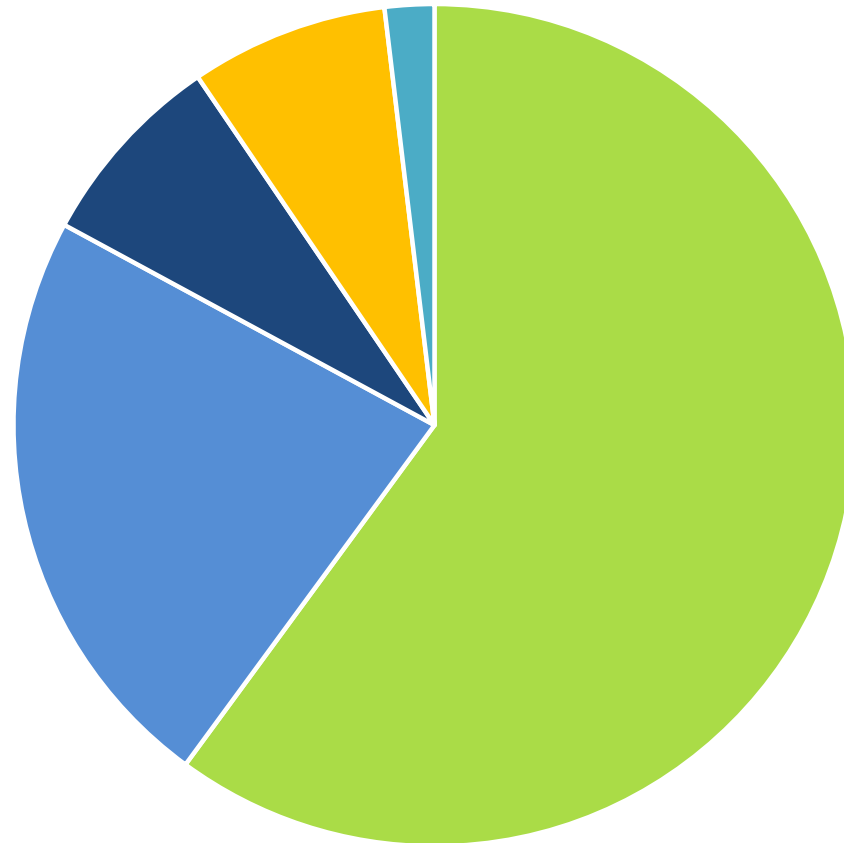
Cost of Renewables continue to plummet compared to Fossil Fuels

The range in Levelised Cost of Electricity (LCOE) per source



*Sources: IRENA 2030 Roadmap, SADC

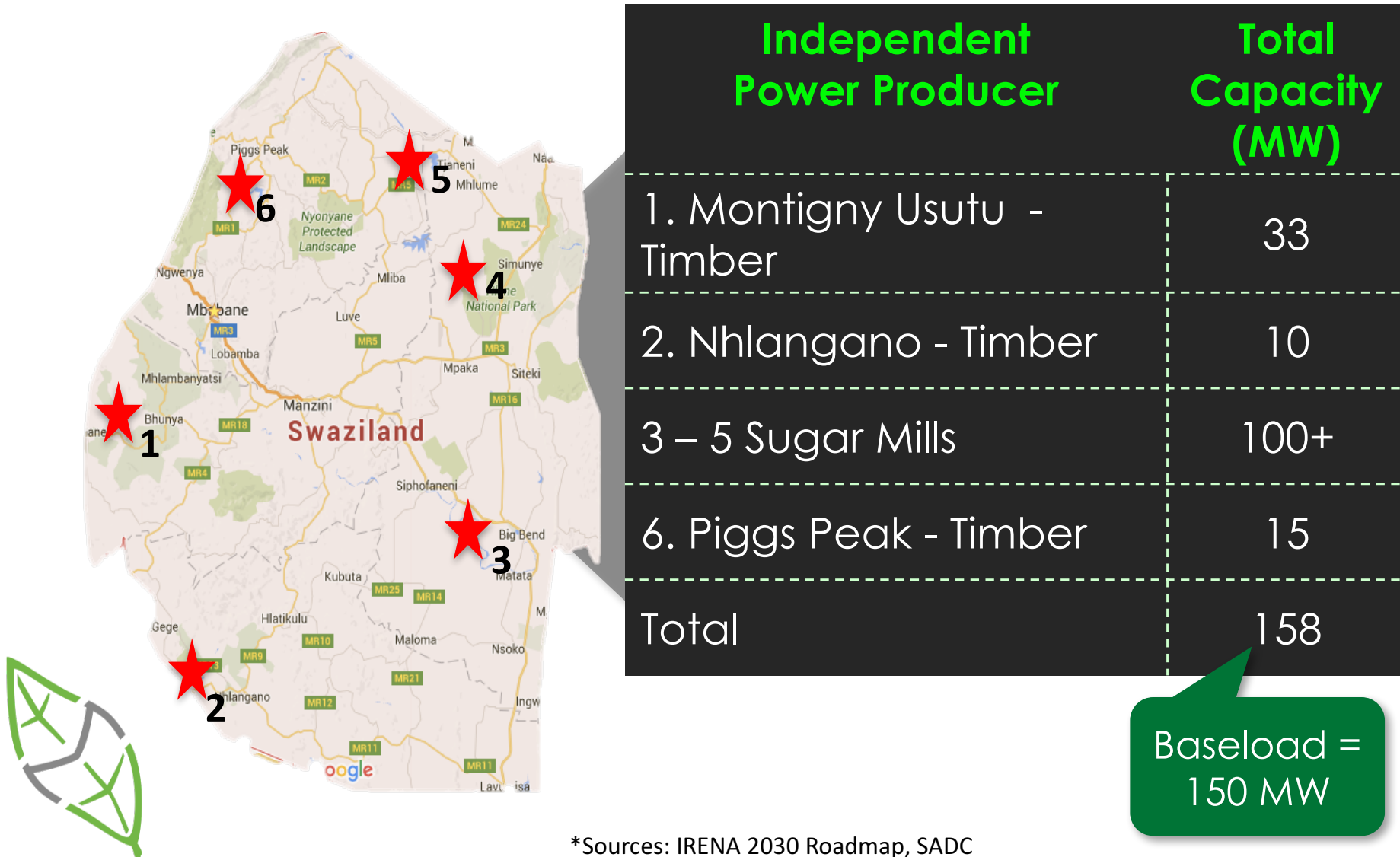
Swaziland's Renewables Potential



- Biomass
- Installed Hydro
- Additional Hydro Potential
- Solar PV
- Wind



Swaziland's Biomass Potential



*Sources: IRENA 2030 Roadmap, SADC

Montigny Investments Limited

The largest private diversified forestry and sawmilling company in Southern Africa

- Swazi Owned, celebrating 20 years
- Turnover: R 2 Billion
- Employment: 6,700
- 80k hectare of land
- 8 mills and processing plant
- Operations: Swaziland, Mozambique & South Africa
- Forestry Stewardship Council (FSC) Certified



Montigny's Biomass Plant



350 000 tons



33 MW



200+



23%



2.5 years



91%

**Annual
Biomass
Consumption**

**Power
Produced**

**Jobs
Created**

**%
Swaziland's
energy
demand**

**Timeline to
COD**

**Load
Factor**



Project Benefits

Environmental

- Unique transportation advantages
- Carbon neutral
- Optimise biomass
- Brownfield site

Economic

- New employment sector
- Market for biomass
- Create 200 jobs
- Stimulate investment opportunities in Swaziland

Energy

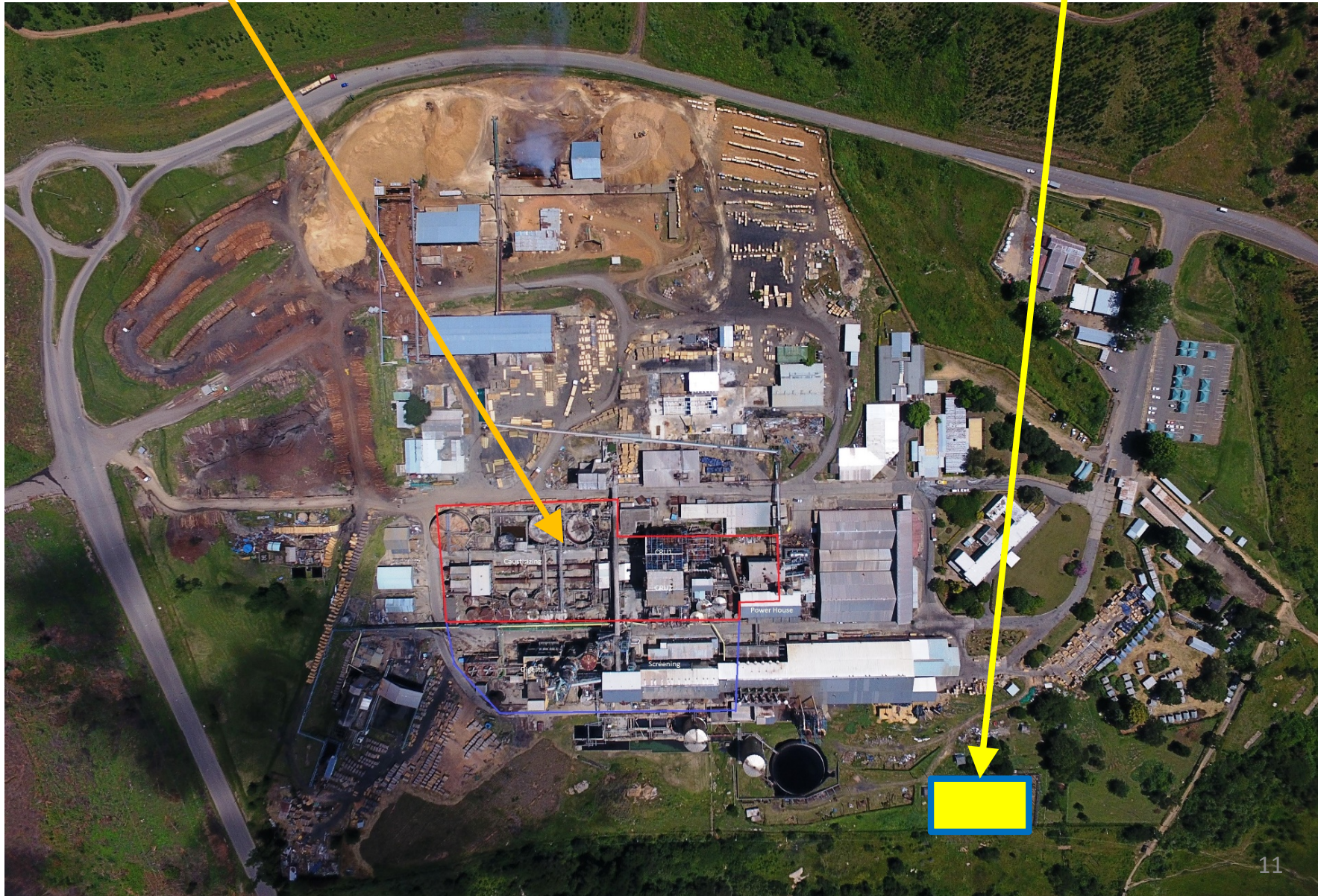
- Provide baseload power supply
- +20% of Swaziland's energy demand
- Stability from local, renewable resource



Area available for the new power plant

Existing 66 kV Electrical Substation

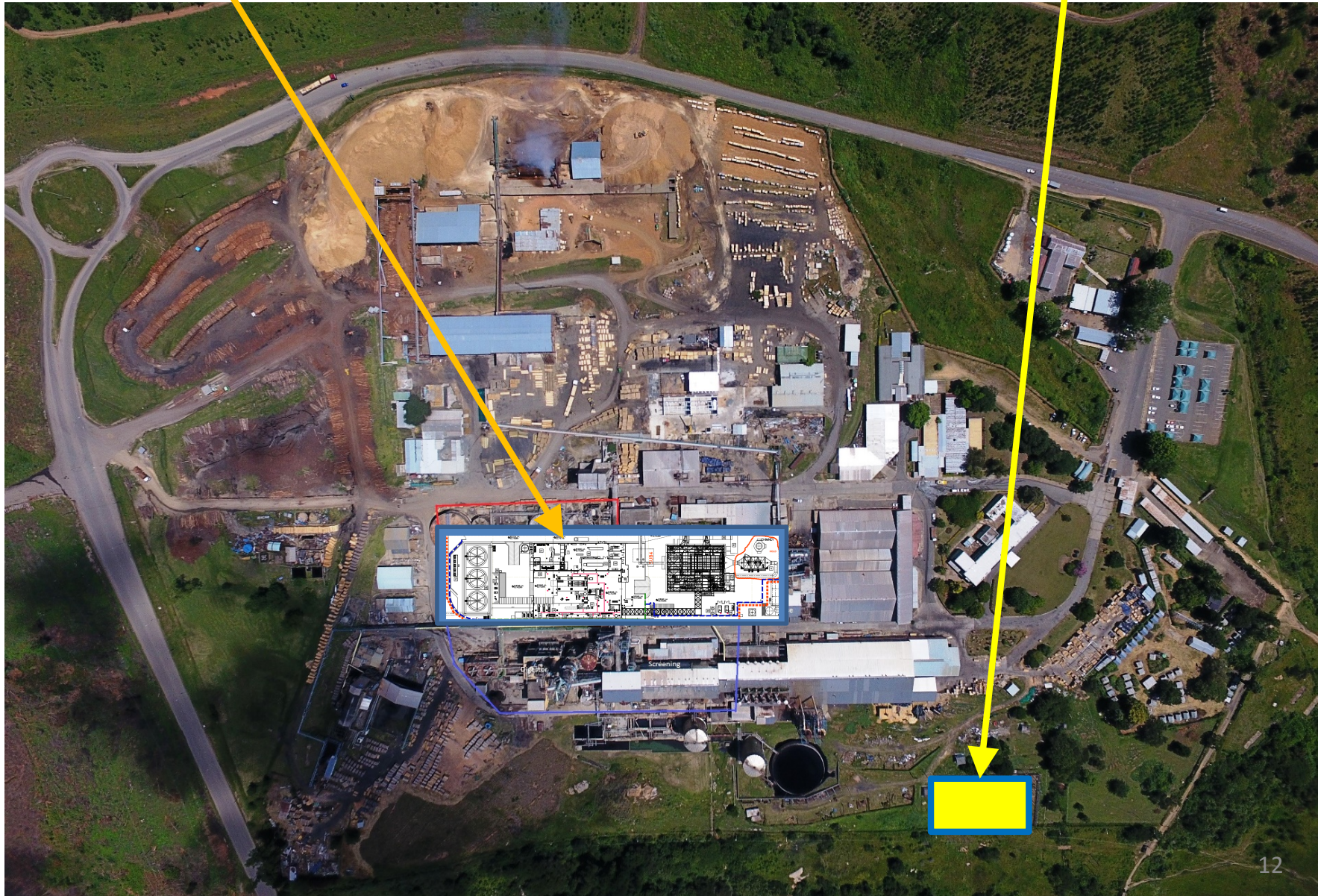
Site Location: Bhunya Swaziland



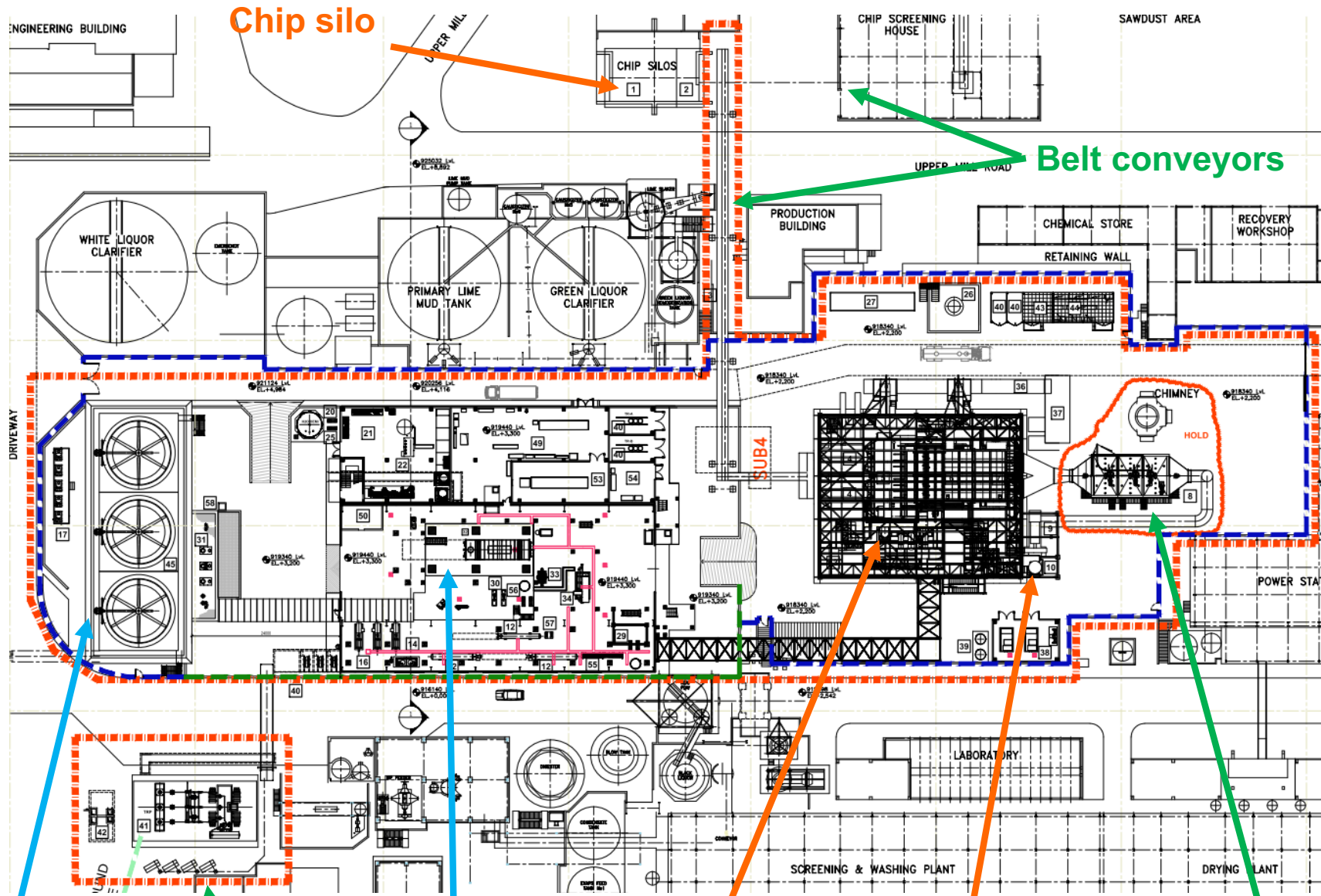
Proposed new
power plant layout

New 132 kV
Electrical Substation

Site Location: Bhunya Swaziland



General Site Layout



Cooling Tower

Step-up Transformer

Steam Turbine Generator

Boiler

New stack

Electrostatic precipitator

In the decade to come...

Thermal → Renewables

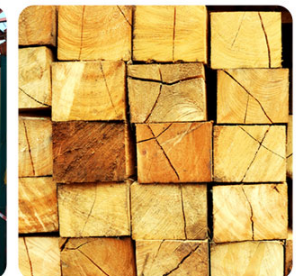
- the World Bank anticipates the demand for electricity to increase by **40%** in SADC
 - Each SADC Member state has agreed to specific commitments in the **Paris Agreement**
 - The RE Job market will more than double to nearly **25 million jobs** (2016 job growth rose by 6%)



*Sources: IRENA 2030 Roadmap, SADC

Swaziland IPPs - Montigny Investments

Thank you



MONTIGNY
